
Data Sheet

產品規格書

Customer (客戶) : N/A

Product (產品) : 2 Feet x2 Feet Ceiling Lighting

2 尺 x2 尺平板燈

Customer Number (客戶編碼) : N/A

Date (日期) : 2014/05/12

PM	QC	RD
Deven	Celevin	Wendy

Specification 產品規格書

Date:2014-05-12

No. :

Version : 02

Page 1/5

Product : 2x2 Feet Ceiling Lighting 2x2 尺平板燈

Part Number :

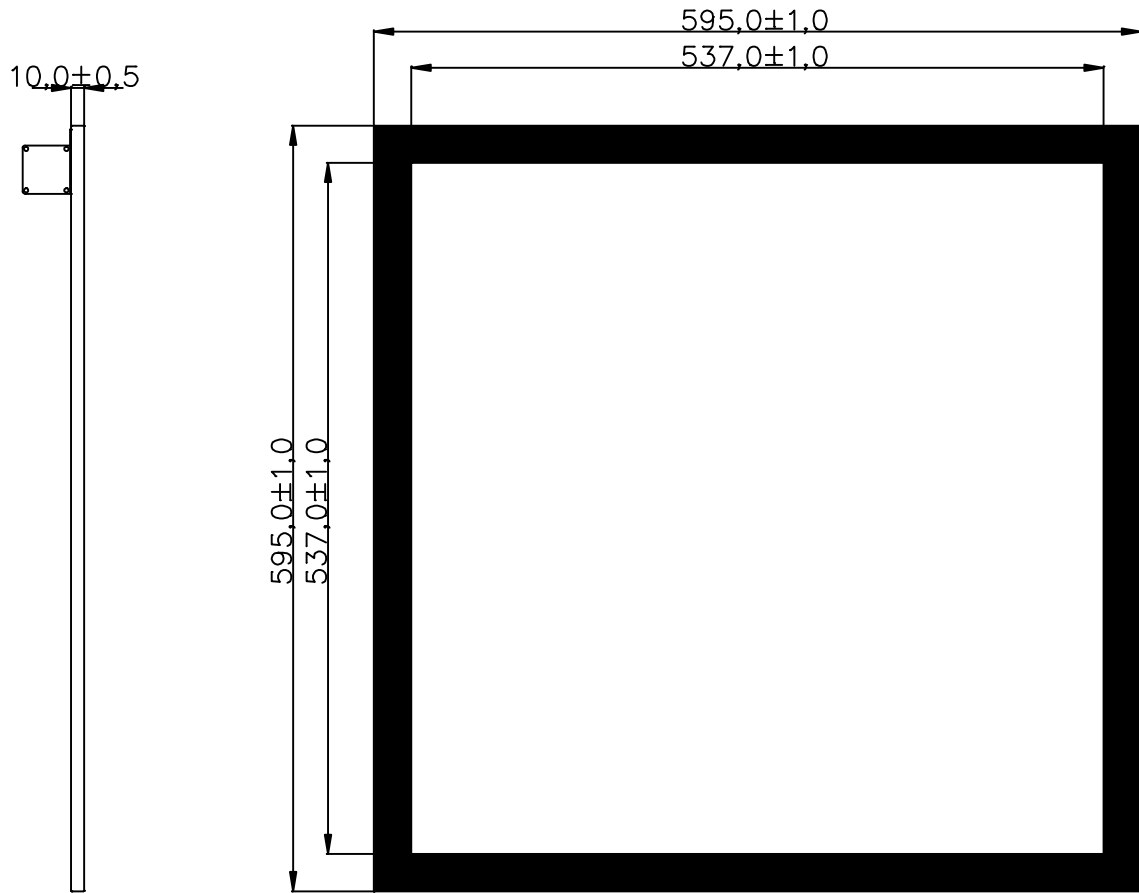
1.Electric spec:電器規格

1	Product Name 產品名稱	2 x2 Feet Ceiling Lighting 2x2 尺平板燈
2	Input Voltage 額定電壓(VAC/Hz)	100~240VAC/50~60Hz
3	Powe Consuption 實測功率(W)	36~40 W
4	Power Factor 功率因素(PF)	>0.90
5	Lighting Flux 燈具總光通量	3200Lm
7	Lighting Efficiency(Average) 燈具發光效率(平均)	80 Lm/W
8	Lighting Luminous Angle 1/20Power 發光角度	68.5
9	Lighting Center Lux @2M 燈具中心照度(Lux)@2 米	350±30Lux
10	Lighting Color Tempture 相關色溫	4000K±275K、5500K±400K、6000K±400K
11	Lighting Color rendering index(%) 演色指數(%) C.R.I	≥75%
12	Light Source Life (hrs) 光源壽命	30000hrs
13	Operting Tempture 操作溫度(°C)	-20°C~40°C
14	Stoge Tempture 儲存溫度(°C)	-20°C~60°C
15	Main Material 主要材質	Aluminum Alloy 鋁合金
16	Lighting Weight 單體重量(g)	3800g
17	Lighting Installation Hight 安裝高度(Meter)	1~3 M

Product : 2x2 Feet Ceiling Lighting 2x2 尺平板燈

Part Number :

2.Lighting Three View: 成品 2D 三視圖



Specification 產品規格書

Date:2014-05-12

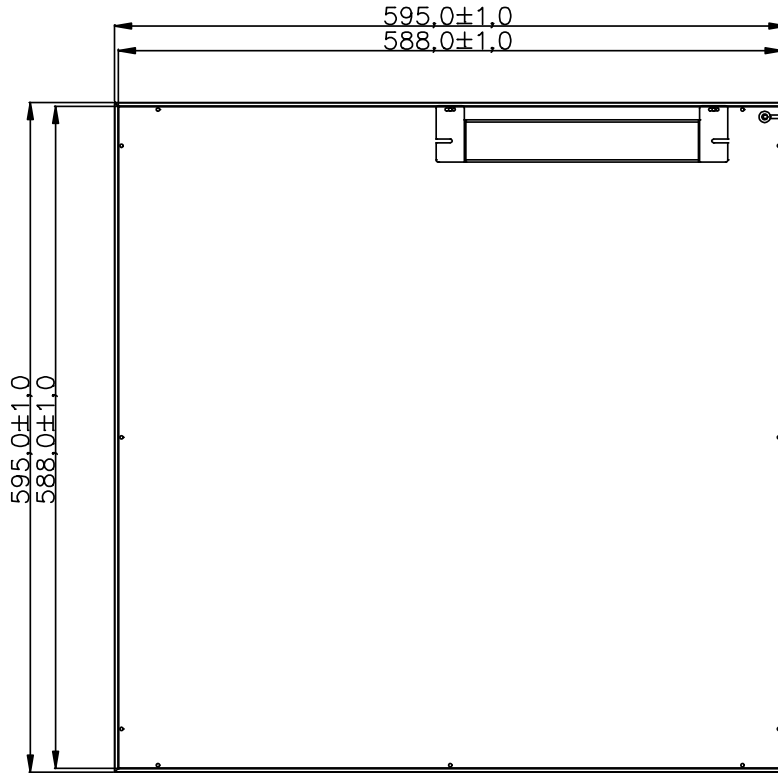
No. :

Version : 02

Page 3/5

Product : 2x2 Feet Ceiling Lighting 2x2 尺平板燈

Part Number :



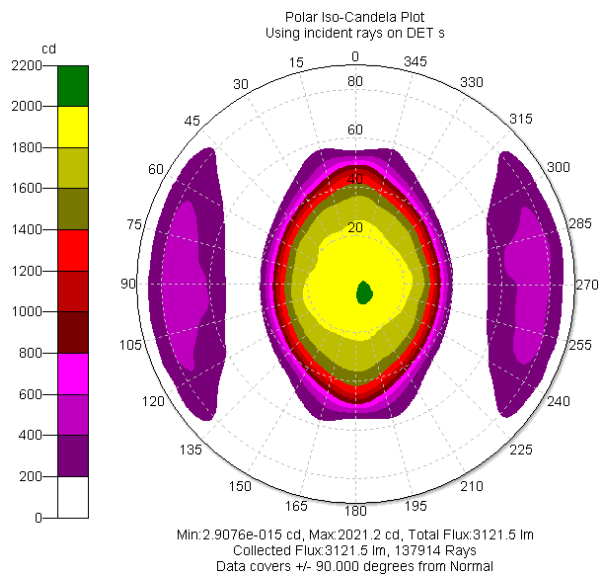
Product : 2x2 Feet Ceiling Lighting 2x2 尺平板燈

Part Number :

3. Lighting Picture: 成品照片圖



4. Ligting Photometry Curve: 燈具配光曲線圖



No.	Time		Flux(lm)	CCT(K)	CRI	Efficacy(lm/W)
A	ON	15 sec	3215.0	5594.3	75.5	76.55
	Initial	1 hr	3120.8	5420.2	74.3	74.3

Product : 2x2 Feet Ceiling Lighting 2x2 尺平板燈

Part Number :

5.Illumination Distribution: 照度分佈圖 :

